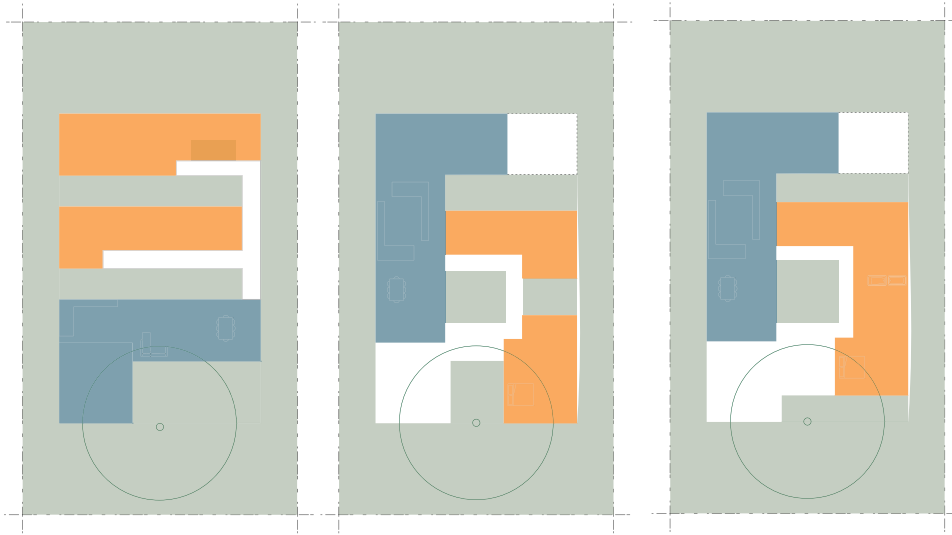
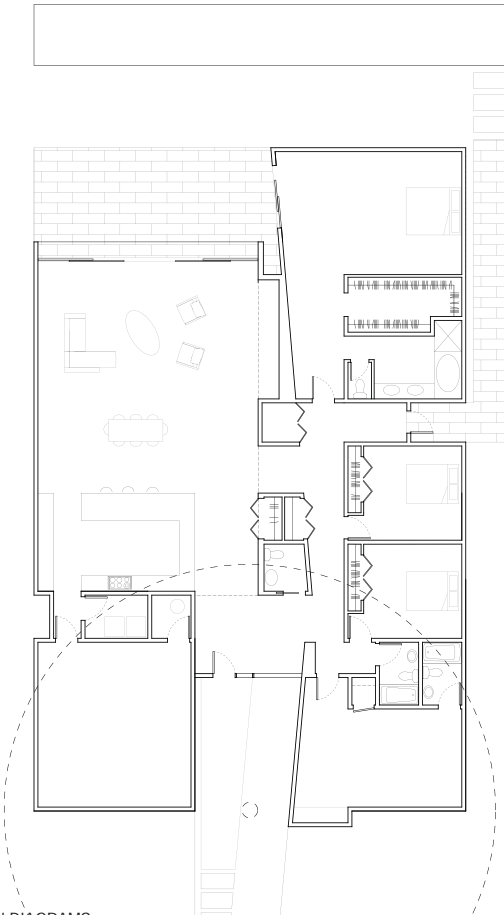


>>TREE\_HOUSE

concept sketch for a single-floor, single family dwelling in san jose, ca that required conservation of a very large, protected coastal oak.

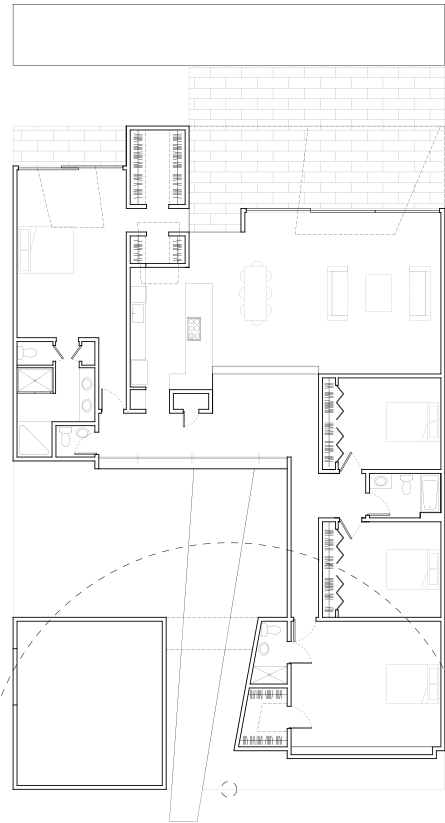


CONCEPT DIAGRAMS



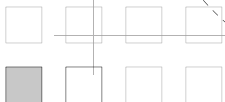
PLAN DIAGRAMS

ISAr 07  
iwamoto/scott architecture



project< single-family dwelling, san jose, ca

designed< dan sullivan/ craig scott/ lisa iwamoto



>>TREE\_HOUSE

