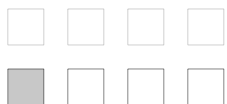
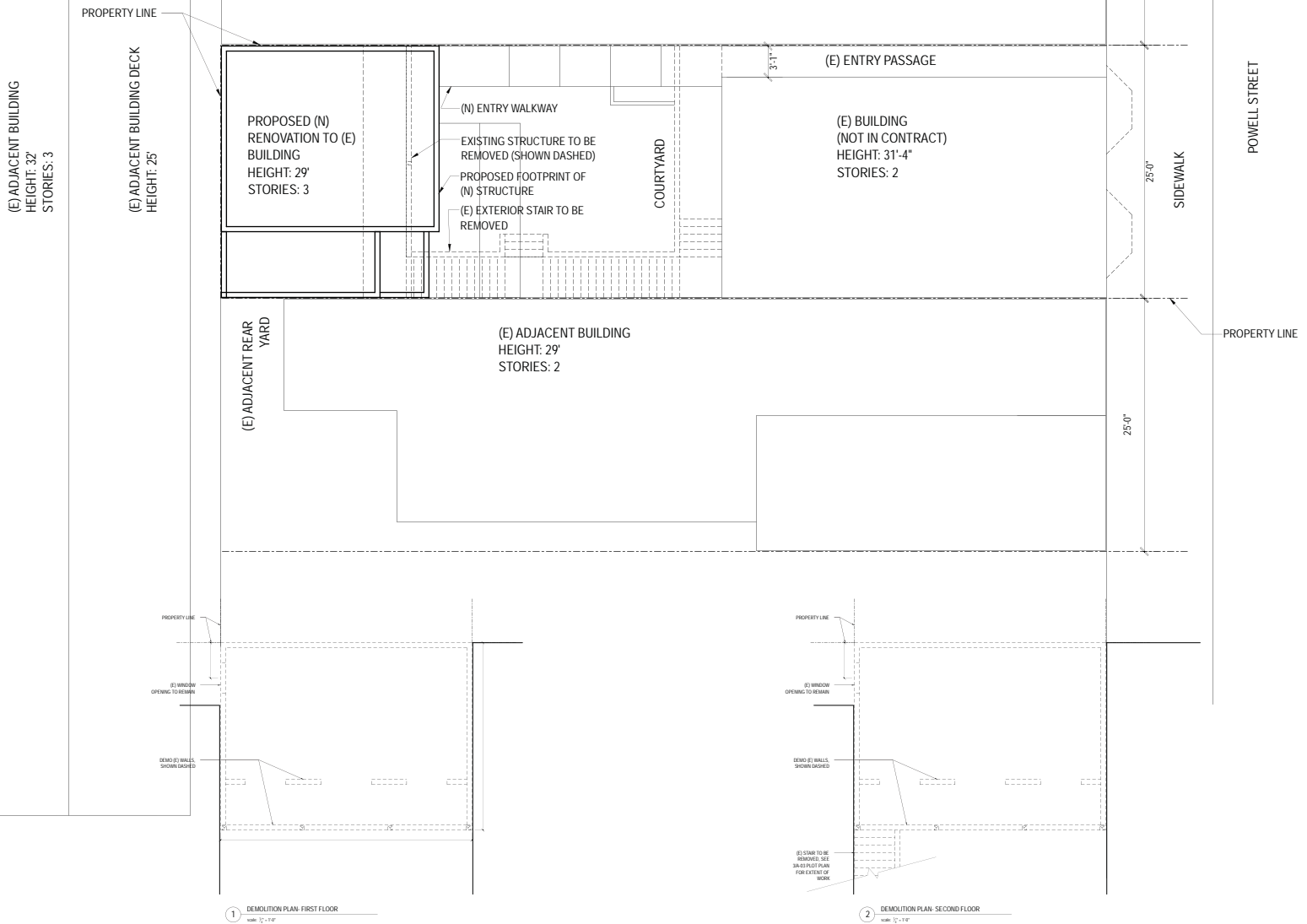


# >> POWELL STREET HOUSE

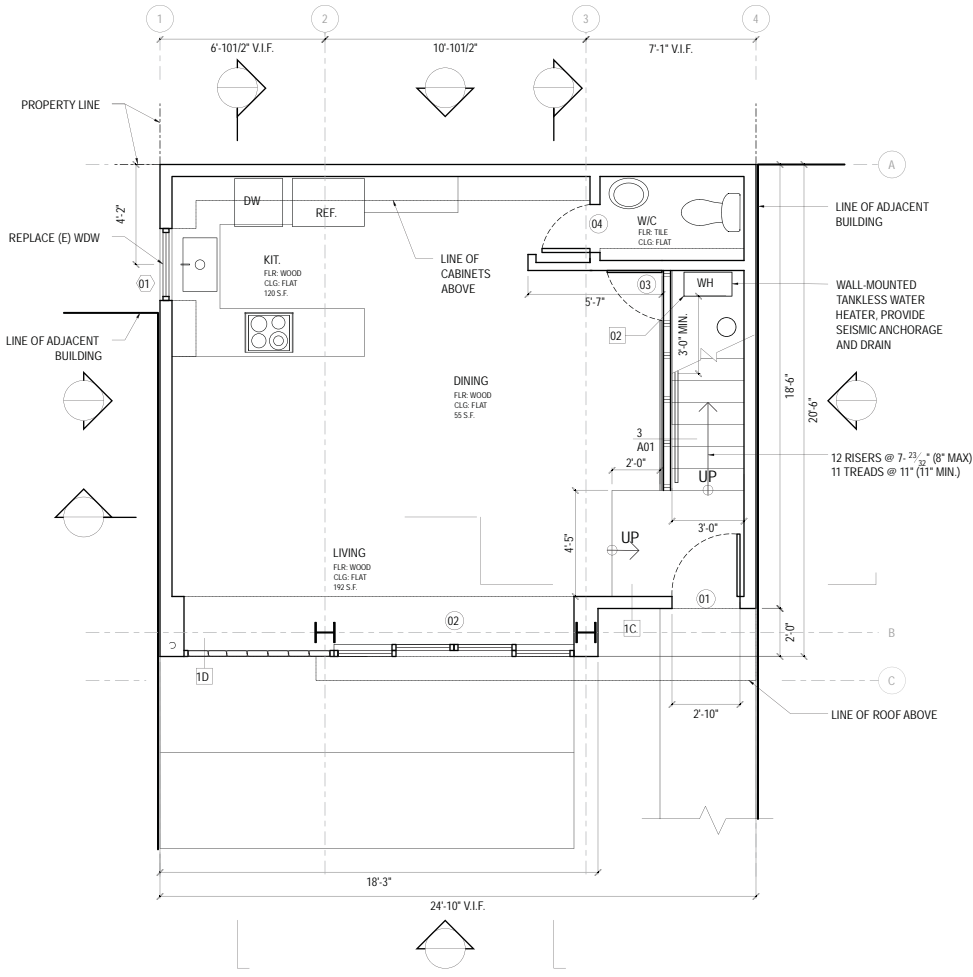
demolition of existing structure and replacement with a new, 1200 s.f., three-story single family dwelling. Project required an historical resource evaluation in accordance with CEQA, and variances for building outside the existing envelope. Project has been submitted for permit with the San Francisco DBI.



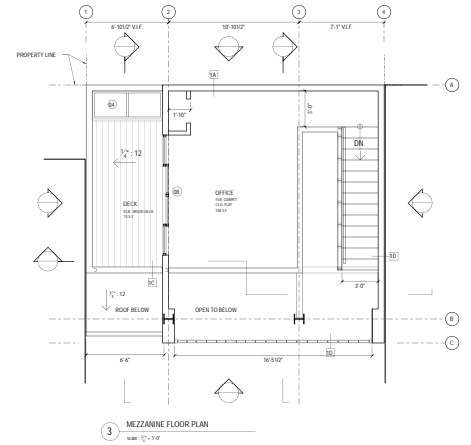
ISAr 07  
iwamotoscott architecture

project < single family infill dwelling  
design < dan sullivan/ craig scott/ lisa iwamoto  
project management < dan sullivan

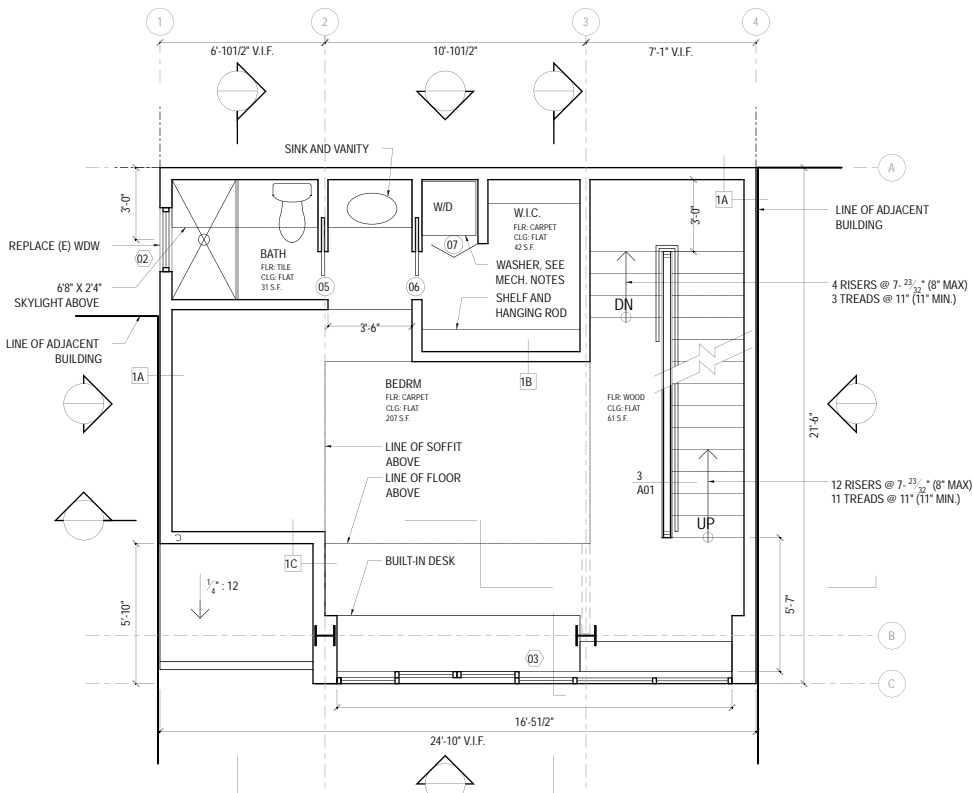
# >> POWELL STREET HOUSE



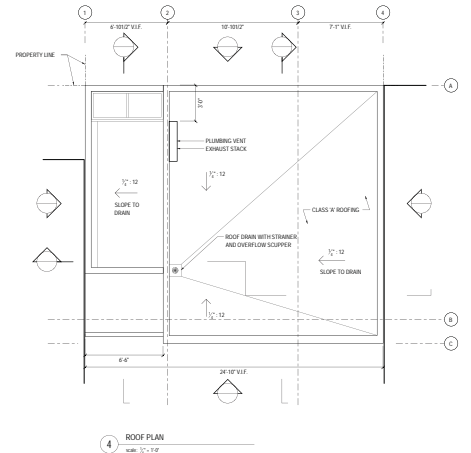
**1** FIRST FLOOR PLAN  
scale: 1/4" = 1'-0"



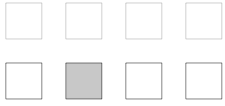
**3** MEZZANINE FLOOR PLAN  
scale: 1/4" = 1'-0"



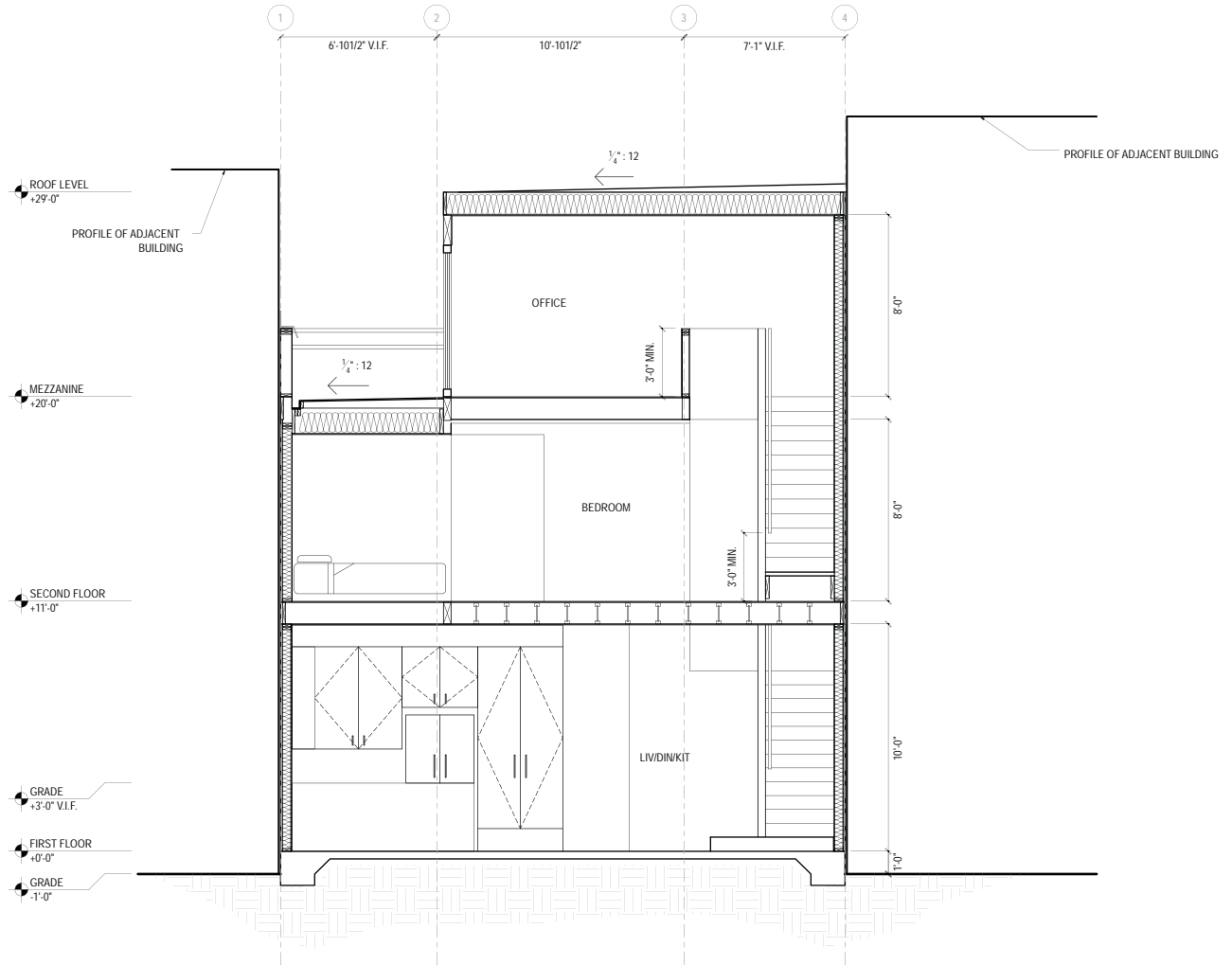
**2** SECOND FLOOR PLAN  
scale: 1/4" = 1'-0"



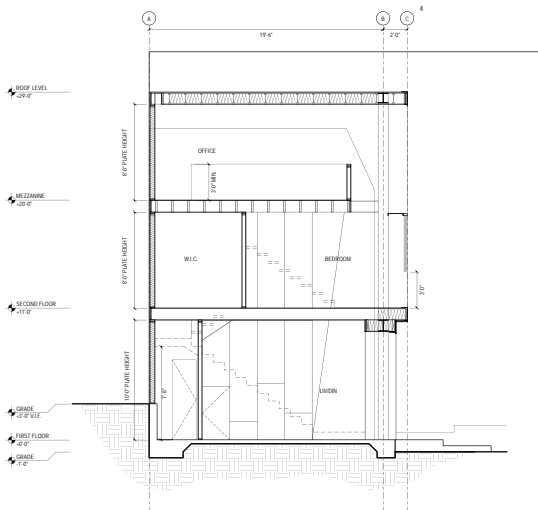
**4** ROOF PLAN  
scale: 1/4" = 1'-0"



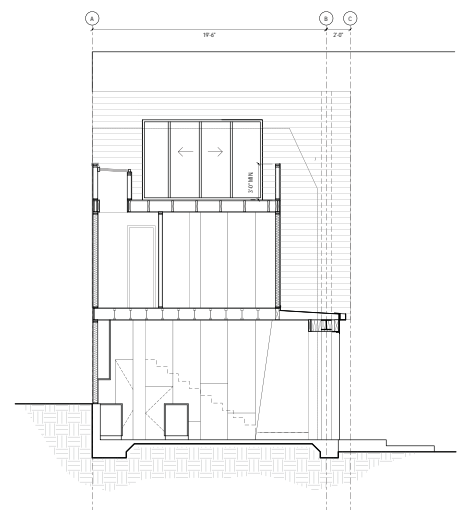
# >> POWELL STREET HOUSE



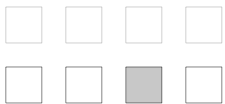
**1** SECTION  
scale: 1/4" = 1'-0"



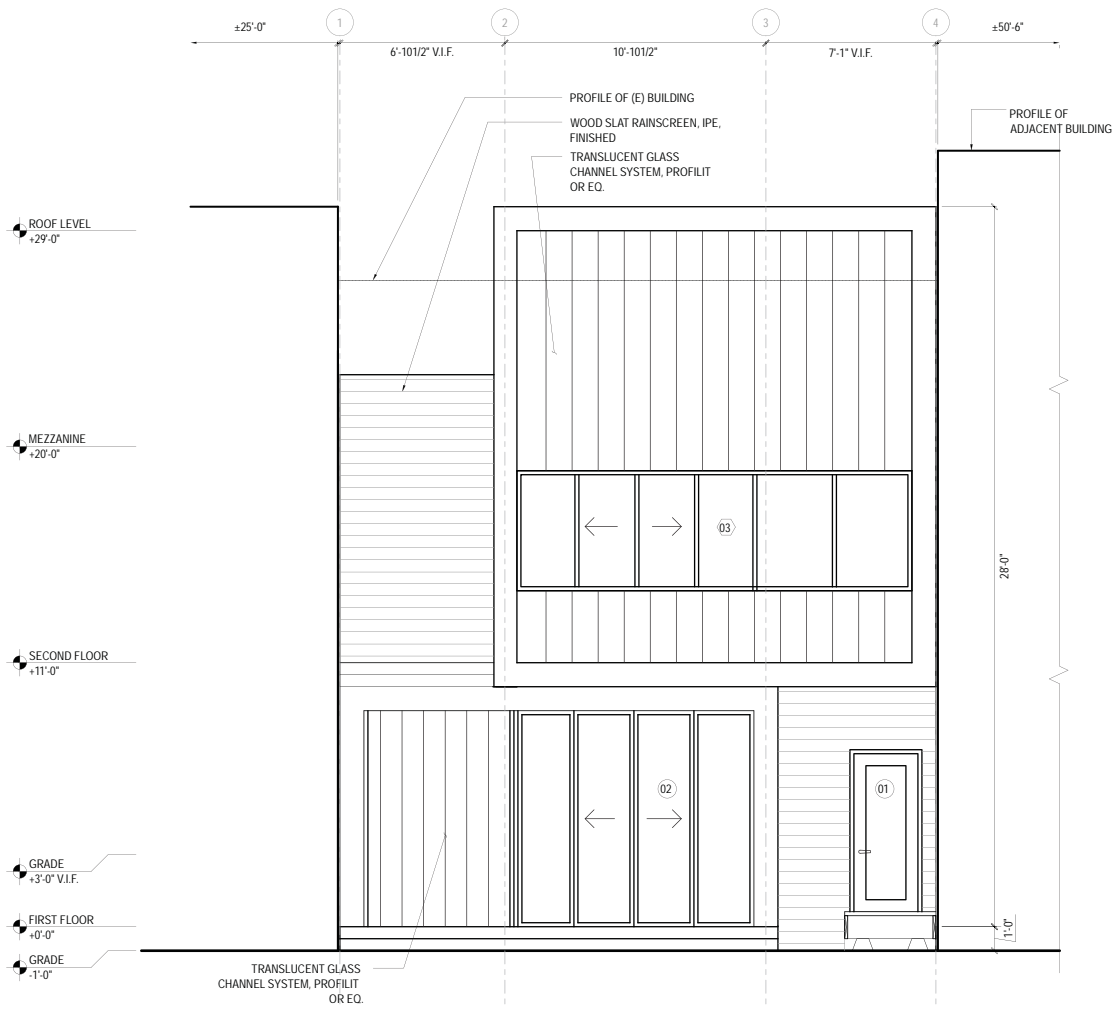
**2** SECTION  
scale: 1/4" = 1'-0"



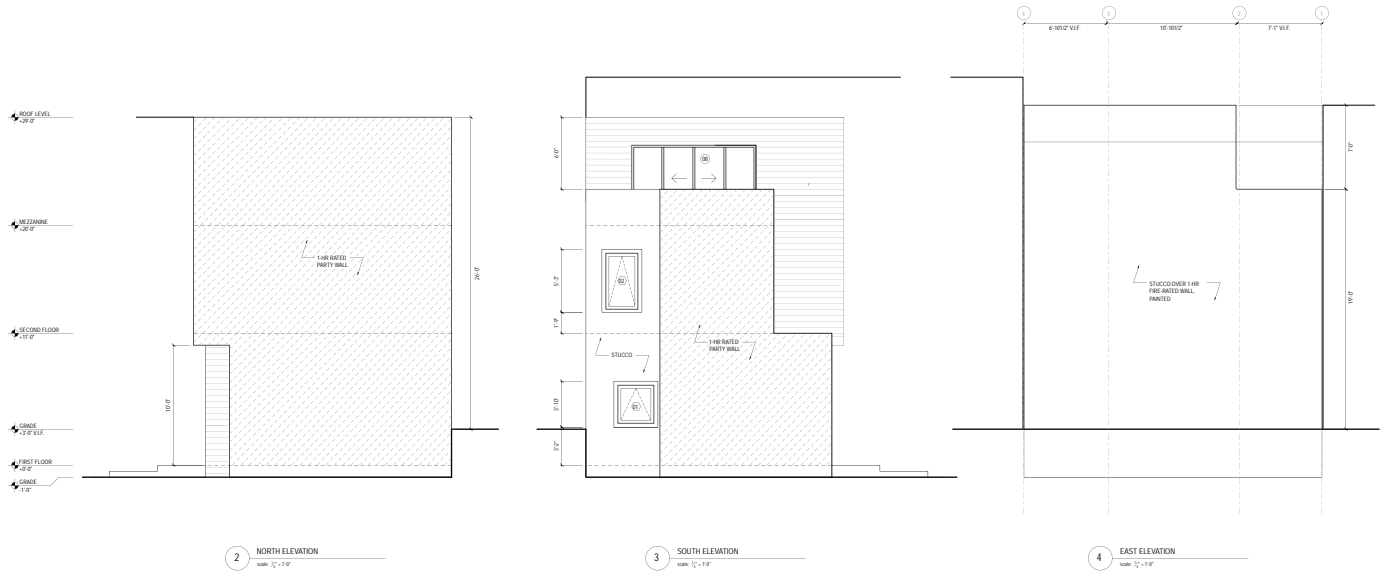
**3** SECTION  
scale: 1/4" = 1'-0"



# >> POWELL STREET HOUSE



**1 WEST ELEVATION**  
scale: 3/4" = 1'-0"



**2 NORTH ELEVATION**  
scale: 3/4" = 1'-0"

**3 SOUTH ELEVATION**  
scale: 3/4" = 1'-0"

**4 EAST ELEVATION**  
scale: 3/4" = 1'-0"

